

<b>Trotter Controls, Inc. FORT WORTH, TEXAS</b>	<b>PRODUCT DATASHEET</b>	NUMBER <b>DS-0014</b>	REVISION
		MODEL N/A	
TITLE <b>DATASHEET – Sequence Works Software</b>  (PRELIMINARY)	BY VT	CHK'D JR	SERIAL N/A
	DATE 7/11/2009	PAGE 1	OF 3

**REVISIONS:**

None

**PURPOSE:**

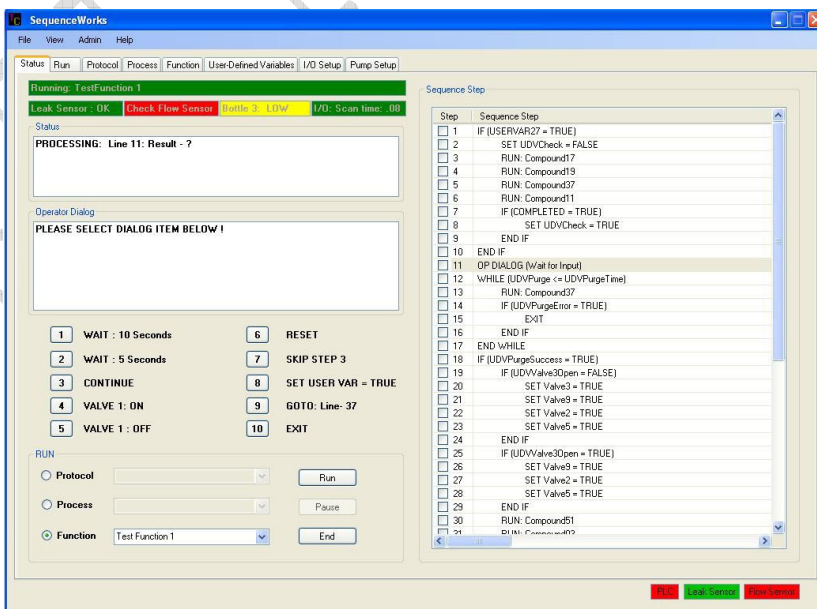
This datasheet provide features and specifications for Sequence Works developed by Trotter Controls, Inc.

**SUMMARY:**

Sequence Works is a simple sequencing engine that runs on Windows XP and Window XP embedded platforms.

Sequence Works provides a very easy to use environment for the creation of machine and process control sequences using a simple Basic like language having built in data management and a context sensitive GUI programming interface.

This product is targeted for OEM's or end users with a pre-defined I/O subsystem. The package now supports the MODBUS protocol but will need to be configured by the factory to support various PLC / IO ModBus Implementations.



<b>Trotter Controls, Inc. FORT WORTH, TEXAS</b>	<b>PRODUCT DATASHEET</b>	NUMBER <b>DS-0014</b>	REVISION
TITLE <b>DATASHEET – Sequence Works Software</b>  (PRELIMINARY)	BY	CHK'D	MODEL N/A
	VT	JR	SERIAL
	DATE 7/11/2009		N/A
			PAGE                      OF 2                                      3

### FEATURES :

- Simple Basic like command set for automation and machine control applications
- Provides sequential input/output and operator interface controls
- Supports 4 simultaneous tasks
- Provides a simple to use runtime interface with START, STOP, PROCEED, SINGLE STEP functionality.
- Provides I/O setup and monitoring menus.
- All programming commands are via easy to use dialog box
- .Net 3.5 environment provides an easy to use expandable tool set
- Supports ModBus Input / Output slaves
- Supports semi-coordinated motion control commands for IMS motors as single motors or as part of a 4 axis mechanism.
- I/O types supported:
  - Digital inputs
  - Digital outputs
  - Analog Input
  - Analog Output
  - Other types can be added for specific requirement
- ModBus I/O Manufacturers Supported:
  - Wago
  - Automation Direct

### DEPLOYMENT

Sequence Works can be deployed for many applications with no customization of the application required. The user must follow the steps below to create and application:

- € Install the Sequence Works software package
- € Define the I/O module usage
- € Name each I/O point or use the default names
- € Use the GUI script writer to develop the sequence routines for the desired machine sequence.

<b>Trotter Controls, Inc. FORT WORTH, TEXAS</b>	<b>PRODUCT DATASHEET</b>	NUMBER <b>DS-0014</b>	REVISION	
TITLE <b>DATASHEET – Sequence Works Software</b>  (PRELIMINARY)	BY	CHK'D		
	VT	JR		
	DATE 7/11/2009		MODEL N/A	
			SERIAL N/A	
		PAGE 3	OF 3	

- € Use the GUI script write to develop any operator dialog required using the built in operator dialog tools.
- € Test the I/O to verify operation.
- € Test the sequence to verify operation.

Due to the large number of possible applications, it is often more cost effective for Trotter Controls to develop the end application and add any custom features that may be needed in the software.

- € Trotter Controls can provide software for various machine applications to suit customer requirements.
- € Trotter Controls can provide turnkey hardware and software packages to suit customer or OEM requirements.

#### **SPECIFICATIONS (PRELIMINARY)**

- € Operating System: Windows XP
- € Compatability: MicroSoft .Net Framework 3.5 & Above
- € Minimum Computer Requirements: TBD
- € Data management: SQL Server 2005-2008 Embedded or Distributed
- € Number of Independent Tasks: 4
- € I/O Subsystem: ModBus TCP/IP
- € Input/Output Latency: 15 ms typical (computer system dependent)
- € Variable Types
  - o I/O
  - o Boolean
  - o Integer Numeric
  - o Floating Point Numeric
  - o String
  - o Motor Position / Transformation
- € Maximum number of variables: Limited only by computer memory
- € Maximum number of subroutines: Limited only by computer memory