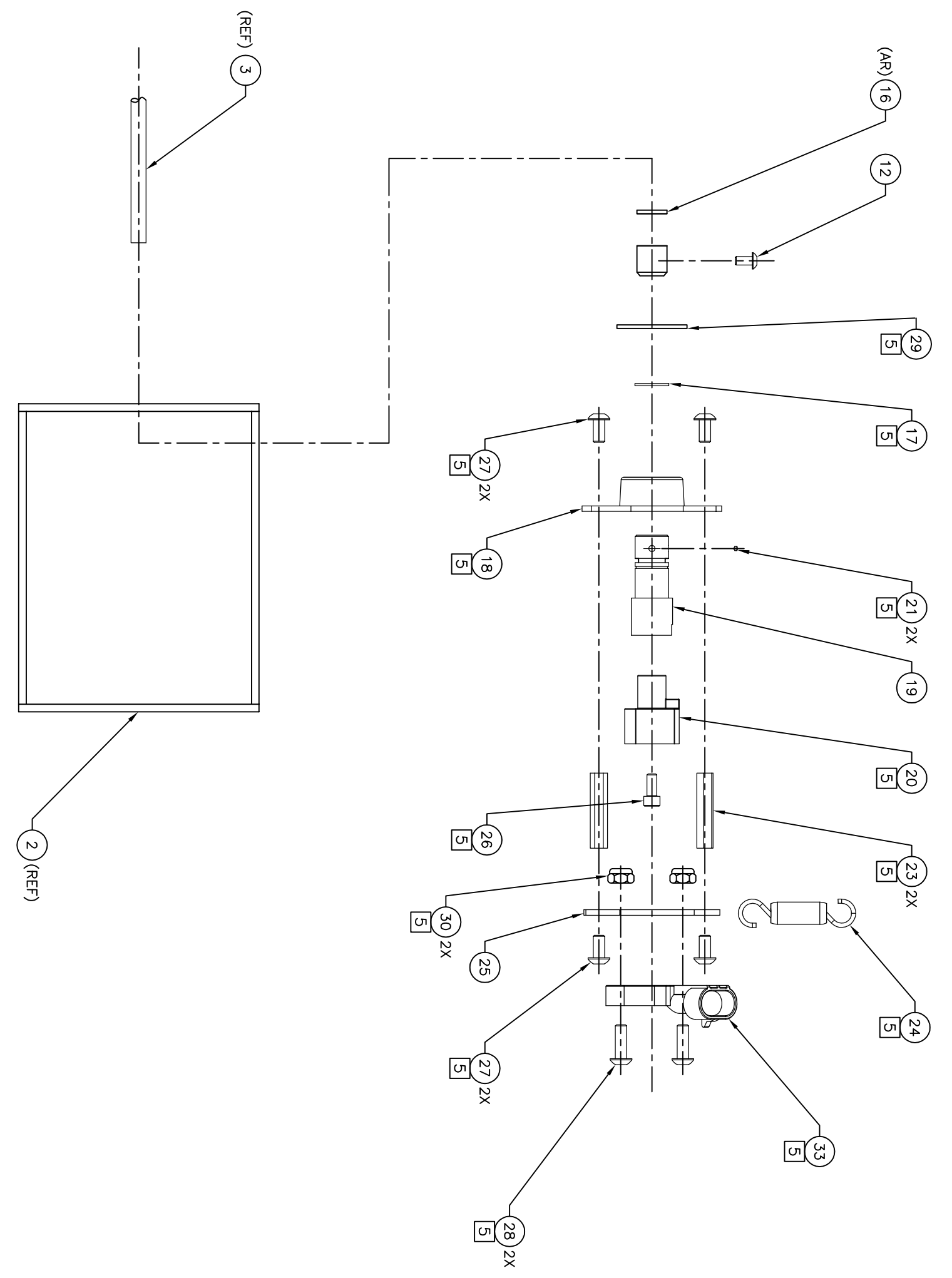
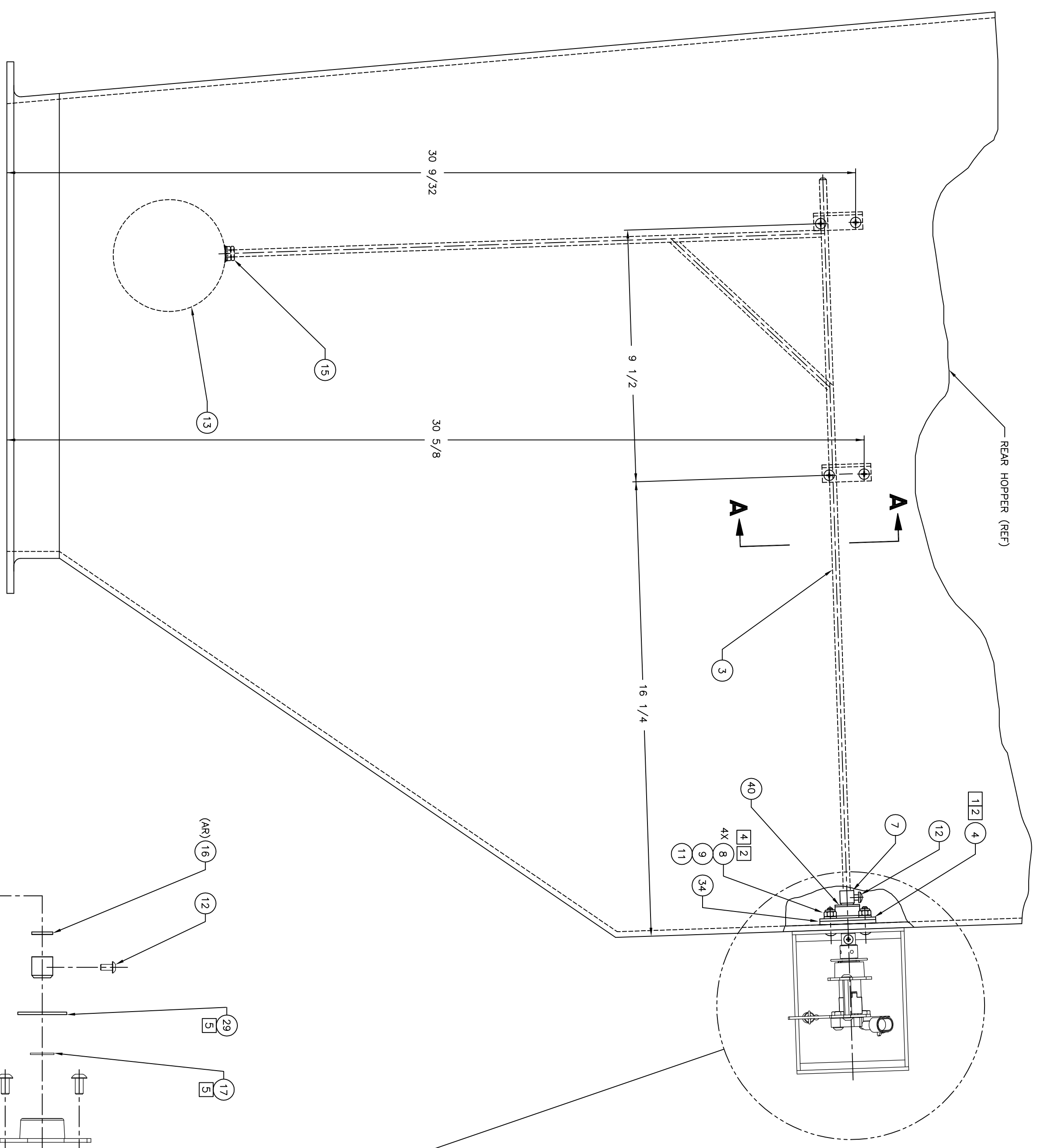
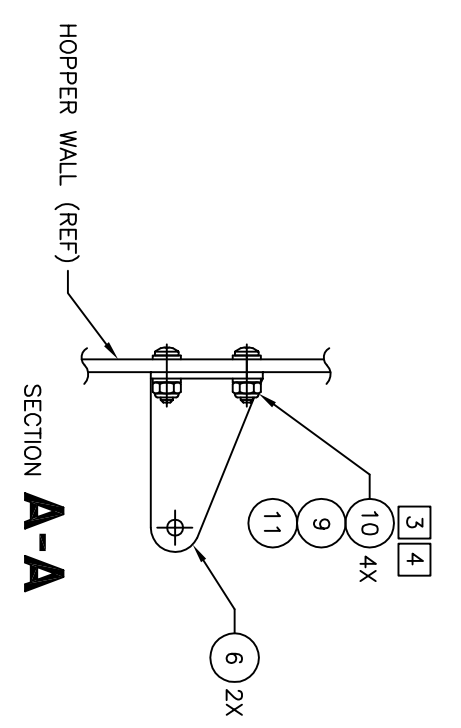


REV	DATE	BY	CHK	APP



- NOTE
1. DRILL HOPPER 1/4 TO MATCH ITEM 2.
 2. DRILL HOPPER 3/16 TO MATCH ITEM 4.
 3. DRILL HOPPER 3/16 TO MATCH ITEM 6.
 4. SEAL HARDWARE INSIDE HOPPER WITH PR1422 SEALANT.
 5. THESE PARTS FURNISHED WITH P/N 1001-0005 FROS-GENZ SYSTEM FROM TROTTER CONTROLS AS SPARES KIT P/N 1098-0015.

ITEM NO.	DESCRIPTION	QTY	UNIT	REV
45	80442-45	1	INSTALLATION	
44				
43				
42				
41	SEE SHEET 3			
40	ANV70C4	1	WASHER	
39				
38				
37				
36				
35	1 81460-1	1	GASKET	
34	3850-0004	1	ANGLE SENSOR (TROTTER CONTROLS)	
33				
32				
31	90101A225	2	NUT (MASTER-CARR)	
30	91367A225	1	SEALING WASHER (MASTER-CARR)	
29	929A9A257	2	SCREW (MASTER-CARR)	
28	929A9A257	4	SCREW (MASTER-CARR)	
27	929A9A141	1	SCREW (MASTER-CARR)	
26	61367-1	1	SENSOR MOUNT BRKT	
25	ALM7-40	1	EXTENSION SPRING (MISUMI)	
24	91115A145	2	STANDOFF (MASTER-CARR)	
23				
22	92785A128	2	SET SCREW (MASTER-CARR)	
21	3850-0005	1	SENSOR MAGNET (TROTTER CONTROLS)	
20	61385-1	1	MAGNET HOLDER	
19	81855-1	1	FLANGE MOUNTED BEARING (SPROFLO)	
18	AN895A16	1	FLANGE MOUNTED BEARING (SPROFLO)	
17	AN895A16	1	FLANGE MOUNTED BEARING (SPROFLO)	
16	1/4-20	1	NUT (STAINLESS)	
15				
14	40A1/4-20	1	FLLOAT (STAINLESS)	
13	90013-4	2	SCREW (STAINLESS)	
12	90013-4	2	SCREW (STAINLESS)	
11	90013-4	2	SCREW (STAINLESS)	
10	90013-4	2	SCREW (STAINLESS)	
9	80262-1	2	BUSSING (STAINLESS)	
8	80262-1	2	BUSSING (STAINLESS)	
7	80092-2	2	BRACKET	
6				
5				
4	81454-1	1	ASSY	
3	80592-1	1	SHIRT ASSEMBLY	
2	81411-1	1	BRKT	
1				