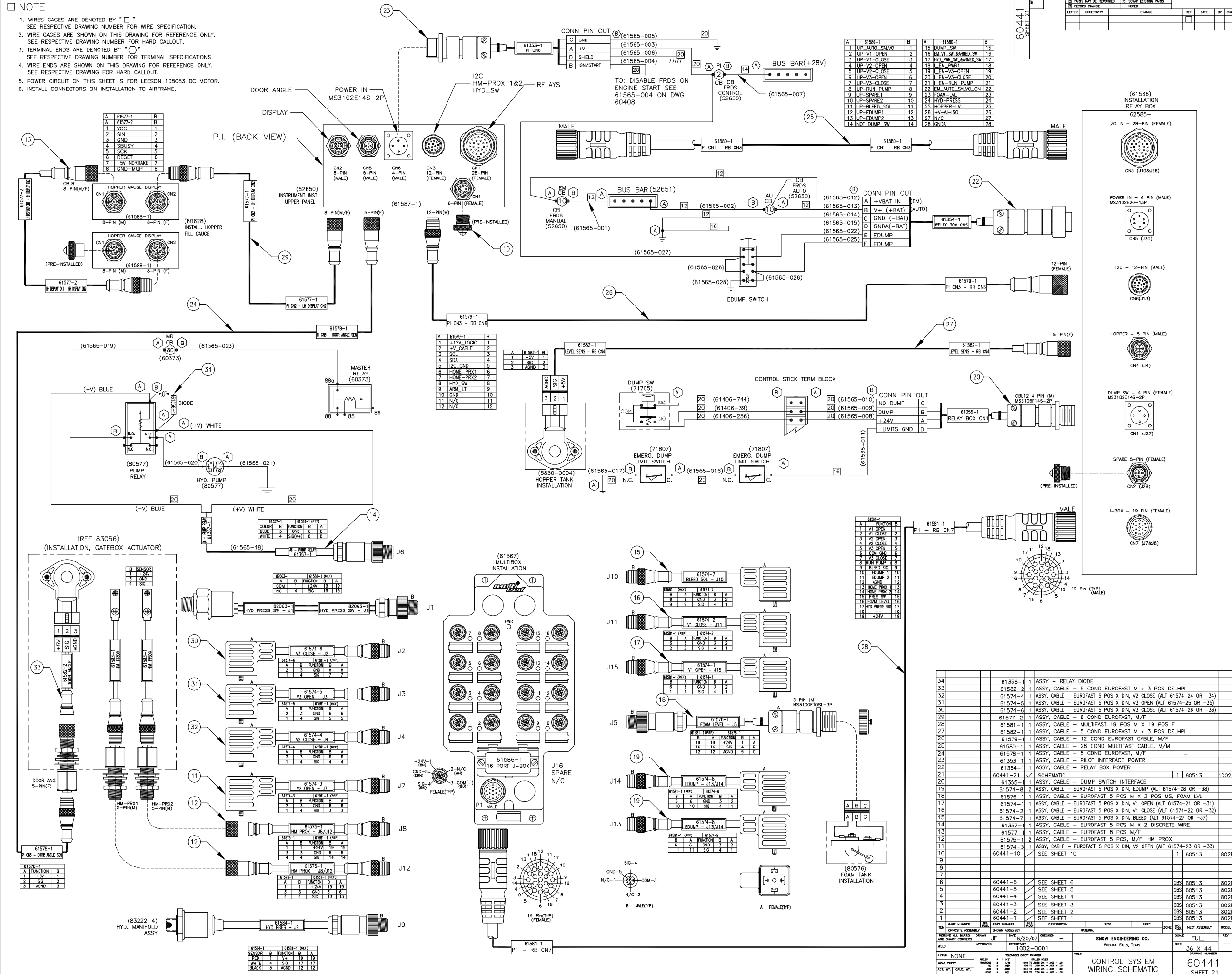


NOTE

1. WIRES GAGES ARE DENOTED BY "□". SEE RESPECTIVE DRAWING NUMBER FOR WIRE SPECIFICATION.
2. WIRE GAGES ARE SHOWN ON THIS DRAWING FOR REFERENCE ONLY. SEE RESPECTIVE DRAWING NUMBER FOR HARD CALLOUT.
3. TERMINAL ENDS ARE DENOTED BY "□". SEE RESPECTIVE DRAWING NUMBER FOR TERMINAL SPECIFICATIONS.
4. WIRE ENDS ARE SHOWN ON THIS DRAWING FOR REFERENCE ONLY. SEE RESPECTIVE DRAWING NUMBER FOR HARD CALLOUT.
5. POWER CIRCUIT ON THIS SHEET IS FOR LEESON 108053 DC MOTOR.
6. INSTALL CONNECTORS ON INSTALLATION TO AIRFRAME.



1	OK TO USE PARTS MADE	2	HOW SHOP PRACTICE
3	PARTS NOT BE REWORKED	4	SCHEMATIC PARTS
5	RECORD CHANGE	6	RECORD EXISTING PARTS
7	LETTER	8	EFFECTIVITY
9	CHANGE	10	DATE
11	BY	12	CHK

60441
SHEET 21

REF	QTY	DESCRIPTION	UNIT	DATE	BY	CHK
34	1	61356-1 1 ASSY - RELAY DIODE				
33	1	61582-2 1 ASSY, CABLE - 5 COND EUROFAST M x 3 POS DELPHI				
32	1	61574-4 1 ASSY, CABLE - EUROFAST 5 POS X DIN, V2 CLOSE (ALT 61574-25 OR -34)				
31	1	61574-5 1 ASSY, CABLE - EUROFAST 5 POS X DIN, V3 OPEN (ALT 61574-25 OR -35)				
30	1	61574-6 1 ASSY, CABLE - EUROFAST 5 POS X DIN, V3 CLOSE (ALT 61574-25 OR -36)				
29	1	61577-2 1 ASSY, CABLE - 8 COND EUROFAST, M/F				
28	1	61581-1 1 ASSY, CABLE - MULTIFAST 19 POS M X 19 POS F				
27	1	61582-1 1 ASSY, CABLE - MULTIFAST 19 POS M X 3 POS DELPHI				
26	1	61579-1 1 ASSY, CABLE - 12 COND EUROFAST CABLE, M/F				
25	1	61580-1 1 ASSY, CABLE - 28 COND MULTIFAST CABLE, M/M				
24	1	61578-1 1 ASSY, CABLE - 5 COND EUROFAST, M/F				
23	1	61353-1 1 ASSY, CABLE - PILOT INTERFACE POWER				
22	1	61354-1 1 ASSY, CABLE - RELAY BOX POWER				
21	1	60441-21 1 SCHEMATIC		1	60513	1002F
20	1	61355-1 1 ASSY, CABLE - DUMP SWITCH INTERFACE				
19	1	61574-8 2 ASSY, CABLE - EUROFAST 5 POS X DIN, EDUMP (ALT 61574-28 OR -38)				
18	1	61576-1 1 ASSY, CABLE - EUROFAST 5 POS M X 3 POS MS, FOAM LVL				
17	1	61574-1 1 ASSY, CABLE - EUROFAST 5 POS X DIN, V1 OPEN (ALT 61574-21 OR -31)				
16	1	61574-2 1 ASSY, CABLE - EUROFAST 5 POS X DIN, V1 CLOSE (ALT 61574-22 OR -32)				
15	1	61574-3 1 ASSY, CABLE - EUROFAST 5 POS X DIN, BLEED (ALT 61574-27 OR -37)				
14	1	61357-1 1 ASSY, CABLE - EUROFAST 5 POS M X 2 DISCRETE WIRE				
13	1	61577-1 1 ASSY, CABLE - EUROFAST 8 POS M/F				
12	1	61575-1 2 ASSY, CABLE - EUROFAST 5 POS, M/F, HM PROX				
11	1	61574-3 1 ASSY, CABLE - EUROFAST 5 POS X DIN, V2 OPEN (ALT 61574-23 OR -33)				
10	1	60441-10 1 SEE SHEET 10		1	60513	802F
9						
8						
7						
6		60441-6 1 SEE SHEET 6			60513	802F
5		60441-5 1 SEE SHEET 5			60513	802F
4		60441-4 1 SEE SHEET 4			60513	802F
3		60441-3 1 SEE SHEET 3			60513	802F
2		60441-2 1 SEE SHEET 2			60513	802F
1		60441-1 1 SEE SHEET 1			60513	802F